

MODEL CS96 8 FT. TANK

DEEPEST IN THE INDUSTRY (13½")
HEAVIEST IN THE INDUSTRY (2620 lbs.)

**NEW FOR
2018/19**

PROPER
CONTINUOUS
FLOW
DRAINS
PLUMBED
BELOW

STAINLESS
HOOD

STAINLESS
HARDWARE

AWESOME
FULL FLOW
NO LEAK
VALVE

STAINLESS
SERVICE
DOORS

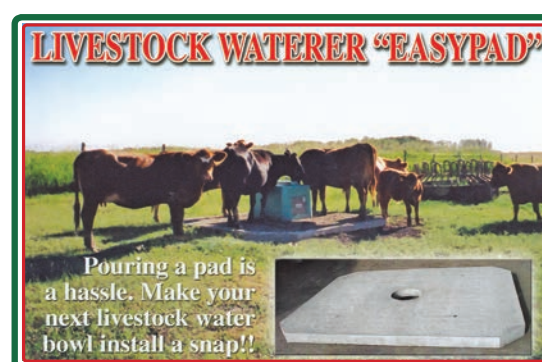
PROPER ROTO-MOLDED DOOR INSERT
(WE DON'T GLUE INSULATION TO THE DOOR)

Advantages of An EasyPad

- Eliminates concerns with last minute installation (i.e. ground frozen, etc.)
"Perfect when winter catches you off guard!"
- Eliminates having to pay extra charge for short load of concrete
- Eliminates the concerns of having the ground fall away due to settling the next year and potentially undermining the pad, leaving a hollow spot. With EasyPad simply pick up the bowl, the pad, fix and pack the ground and you are good to go.
- Eliminates having to buy forming materials, steel and of course, the labor to make pad when the summer is short already.

Design and Construction Features

- Dimension: 7'6" x 6'6" Wt. 2560 lbs. (8' x 6'6" also available)
- Poured in place inserts and bottom stand offs so that pad can be picked up with a front end loader, pallet forks or even bale forks if spacing is correct and they are strong enough.
- Built to a standard to withstand Cancrete's heaviest bowl and livestock weight using the same dry pour 8000 PSI concrete as Cancrete's bowls.
- Fully designed with steel reinforcement to withstand freeze thaw cycles.
- Corners eliminated as cattle break them off anyway.
- Rough surface and 14" diameter hole in center to allow for any size riser pipe.

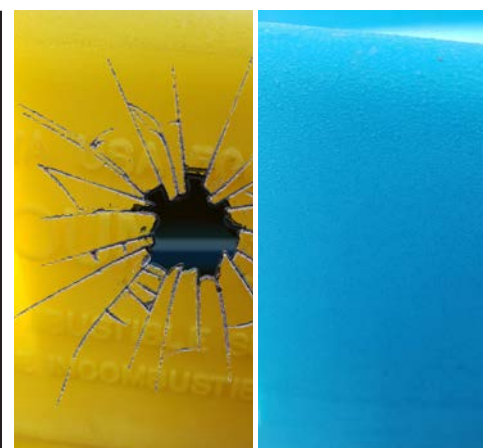


READY FOR SOME COMMON SENSE WHERE USING A CONCRETE WATERER IS CONSIDERED?



BALL & DISC WATERERS

These had to be designed by someone in a "very" warm climate (Southern Texas) or someone who has never had cattle! They slobber, when below 32°F it freezes the ball or disc in place. You will be breaking those balls or discs loose for the rest of your days with these tanks when freezing!



CONCRETE VERSUS PLASTIC IN A LIVESTOCK WATERER

- Zero heat retention
 - Have you ever seen a plastic feed bunk? Wonder why?
- Benefit:**
You can take it home in the back seat of your car.



STEEL PAN WATERERS

The makers want you to think they are efficient! Really? Steel has no heat retention. Plus if you put an element under a pan, it becomes a radiant heat source. It makes no sense to heat the pan, the whole tank, and half the countryside! That poor little element underneath can't possibly keep up. Some turn on in November and shut off in March. May not freeze, but sure keeps the power company happy!

Concrete is perfect for a Livestock Tank! It has, little or no R or insulation value "BUT" it has tremendous heat retention! It's a stone! We have had the power go off for 6 hours in Minus 40F and these are the only tanks that didn't freeze right over. No surprise! That, coupled with high efficiency elements, keeps your power bill in check! Durability is obviously a non-issue, look at our warranty! Longest in the industry.

NOTES:

- Cancrete® bowls can be set up with Electrics, Continuous Flow, the Auto Continuous Flow or Concrete Insulated Bowl only.
- Shipping weights are approximate.
- Dimensions are approximate and are taken from measurements of the base of the hull, height is to top of drinking lip on bowl.
- All standard models are 110v.
- Standard valve assembly is 3/4" Valve w/ 6" Stainless Ball. Model C450 + larger use a 1" valve.
- The reason for two sets of specifications on "number of head" is cows drink in groups therefore more open bowl space is required to reduce fighting and possible injury.

CANCRETE®'S 10 Year Warranty (2 Year Full Replacement on Hulls) shows we have confidence in our product.



Manufactured by:
Advanced Agri-Direct Inc. (USA)
710 W. 26th Street, York, NE 68467-9631
Toll Free: 1-866-398-5546
WWW.CANCRETE.COM (See Dealer Listings)
Email: david@cancrete.com
Often all you want is "EVERYTHING"!!



North American made for producers who "Demand the **Best**"

710 WEST 26th STREET • YORK, NEBRASKA 68467-9631 • TEL: 1-866-398-5546

When all you want is "Everything!"



To make a concrete waterer that will last through years of use, you need the best in concrete technology matched with the best of components.



Close up of heavy gauge stainless steel float assembly



Pasture tested and cattle approved!



Concrete at minus 23°F



Bison tough!

NEW!
250 WATT PRIMARY ELEMENT
(UP TO C350)
South of Central U.S.
TESTED TO -31°F

- Heavy gauge Stainless Steel is used on the valve cover, service door, ball float and all hardware.
- Easy access through the large service door.
- Precast hulls are made from steel reinforced, 8000 PSI, air entrained, sulphate resistant concrete.
- A model for any size pen of cattle, horses or bison.
- Deep Trough bowls are easy to clean and have 2 funnel drains in C250 and up.
- No sharp corners.
- Bowls are epoxy coated providing chemical protection from sodium, manure, acid and silage.



Center Hood Tanks
Maximize Heat Efficiency!



CDESA50
Perfect for ACREAGE use, Small Herd of Cattle, Horses, Sheep, Goats and Exotics!

C150
CANCRETE'S Model C150 is perfect for Smaller Groups, Sick Pens, Horses & Bison



C250
An Excellent choice for Cow/Calf Pens and up to 250 Head of Feeder Cattle!

C350
C350 is an Ideal Mid-Range Waterer and Perfect for Pens of 300 Head!

Cancrete in dog kennel



C450
The C450 Stops Fighting in Cow Pens and will Service Pens of up to 450 Head!



C550
Our C550 will look after up to 700 Head of Cattle and is great for Free Stall Dairy Barns with or without Electrical!



D800 Dairy and Big Feeder Bowl
Designed to fit between feed alleys with multiple drains or in "BIG" feeder pens.



If these guys can't wreck them, your cattle shouldn't be a problem.

CANCRETE® CATTLE WATERERS - SPECIFICATIONS & PRODUCT NOTES

Model	No. of Head Feeder Cattle	No. of Head Cows	Dimensions	Primary Element	Aux. Element	Weight	Capacity
CGSA50	N/A	50 Goats or Small Animals	21¼"L x 24¼"W x 14"H	300 W	1 x 98 W	340 lbs	5 gal.
CESA50	N/A	50 Horses or Small Animals	22"L x 24 7/8" W x 18" H	300 W	1 x 98 W	380 lbs	5 gal.
CDESA50	40 Calves or 30 large Cattle	40 Calves, 30 Cows, 40 horses or small animals	36"L x 27"W x 18"H	250 W	1 x 89 W	560 lbs	10 gal.
C150	1 - 150	0 - 50	33"L x 36"W x 25"H	700W	1 x 98 W	860 lbs	19 gal.
C250	200-250	50 - 120	37"L x 36"W x 25"H	700 W	1 x 98 W	960 lbs	28 gal.
C350	300 - 350	120 - 220	43"L x 36"W x 25"H	1000 W	1 x 98 W	1060 lbs	35 gal.
C450	300 - 400	220 - 350	69"L x 36"W x 25"H	1000 W	2 x 98 W	1600 lbs	68 gal.
CS75	350 - 450	220 - 350	78"L x 36"W x 25"H	1000 W	2 x 98 W	1660 lbs	75 gal.
C550	500 - 600	350 - 500	93"L x 36"W x 25"H	1000 W	2 x 98 W	2060 lbs	120 gal.
CS96	Up to 500	Up to 400	96"L x 36"W x 25"H	1000 W	2 x 98 W	2620 lbs	123 gal.
C120	400 - 500	220 - 350	12"L x 36"W x 25"H	1000 W	2 x 98 W	2480 lbs	140 gal
D800	600 - 800	500 - 650	168"L x 36"W x 25"H	1000 W	2 x 98 W	3650 lbs	210 gal



Nebraska Cow/Calf Confinement



Falkton, SD - minus 23°F



Dawson Creek, BC - minus 37°F

ALL LIVESTOCK WATERERS ARE NOT CREATED EQUAL. **CANCRETE®** HAS BEEN ENGINEERED TO WITHSTAND HARSH WINTER, HOT SUMMER AND HEAVY USE BY EXOTIC ANIMAL, EQUINE, DAIRY, COW/CALF & FEED YARD PRODUCERS.

Service door locations can be relocated for different operations

Nobody knows better than livestock producers the importance of water to animal gain and condition! The last thing you need is waterer problems in -40°F or + 90°F

**Don't Make a Purchase.
Make an Investment!**



CESA50
Indestructible for Equine and Elk!



CGSA50
Ideal for Boer Goats, Sheep and Small Animals

C120
"The Bad Boy"
Ideal for large cow numbers & Feedlot application. Excellent for continuous flow and beef barns where end service door is outside.



CS75
The one the Feed Yard and Large Cow/Calf people love! Excellent for continuous flow and beef barns where end service door is outside.



CS96
The deepest and heaviest 8 foot tank on the market will support up to 500 head of feeder cattle or 400 dairy cattle.



Cancrete - perfect for confinement buildings

These waterers can withstand the abuse and the animals! Proven success in all the major Feedlots, Dairies, and for Cow/Calf, Cancrete® comes out on top.